

CASE
CONSTRUCTION

CX B SERIES
COMPACT EXCAVATORS

CX31B | CX36B | CX55B




MINI EXCAVATORS. MANY ADVANTAGES.

Whether you're a small business or a general contractor needing impressive power within a small space, the full line of CASE compact excavators offers all the features and functionality needed to handle the toughest jobs in the tightest places. Three Tier 4 Final models deliver breakout forces from 6,227 to 11,028 lbs. and digging depths up to nearly 13 feet. And it's all powered by high-efficiency hydraulics that maximize performance, and precision controls that instantly feel familiar. Experience the big-time benefits of the CX B Series.



 **Zero Tail Swing***
*Excludes CX55B

 **Center-Swing
Boom Control**

 **Integrated-Flow
Pump System**

 **In-Frame Sliding Door****
*Excludes CX55B



Models Available



CX31B



CX36B



CX55B

★ Three-Post
ROPS Design

★ Automatic
Two-Speed Travel

IT HOLDS NOTHING BACK.



IN THE CLEAR WITH ZERO TAIL SWING*

CASE compact excavators offer a true, zero-radius tail swing that keeps the sides and back of the machine within the width of the tracks when rotating – even with the door open. You can dig and dump 180°, right against obstacles, without a problem and with less risk of damaging the machine or worksite.

*Excludes CX55B

FOOT PEDAL CENTER-SWING BOOM CONTROL

A foot-controlled boom swing allows for simultaneous operation of the house and boom. Coupled with a center-swing design that angles the boom up to 80° left and 65° right, operators are able to dig and use attachments around trees and parallel with foundations, fences, walls or whatever's on the worksite.

INTEGRATED-FLOW PUMP SYSTEM: SMART POWER PLACEMENT

This innovative system helps improve fuel efficiency and maximize strength by directing hydraulic power to where you need it, when you need it. With dozing, flow is focused on the tracks and blade. When swinging or raising the arm, pump power is diverted to the boom. During digging, all flow is pumped to the bucket and arm.



FASTER CYCLE TIMES WITH AUTOMATIC TWO-SPEED TRAVEL

The two-speed travel drive function matches speed and performance to jobsite conditions. All models also include one-touch engine deceleration to quickly cut engine RPMs for greater fuel savings and reduced noise levels.

“My two CASE compact excavators just shine. We have had zero problems.”

— Benoit Drainage





**THREE POST CANOPY*.
360° VISIBILITY.**

Our ROPS-certified three-post canopy design creates a wide-open entry area for easier access in and out of the operating platform. And as an added benefit, the absence of a fourth post provides greater visibility of the attachment and around the machine.

*CX55B features a four-post ROPS/
FOPS-certified canopy.

GET A LITTLE MORE COMFORTABLE.



SMARTEST CAB DOOR IN ITS CLASS

What's the point of a zero tail swing design if the open door hangs over the tracks? CASE compact excavators* come standard with a cab door that slides all the way open within the machine frame, keeping it securely out of the way.

*Excludes CX55B

Sliding cab door maintains zero tail swing.

PRECISION CONTROLS COME STANDARD

All CASE compact excavators – even our smallest models – come standard with hydraulic pilot controls for comfortable, highly responsive operation. On top of that, all models also feature a pattern control selector valve that lets you easily toggle between ISO and SAE patterns to meet operator preference.



CONSTRUCTED FOR COMFORT

With an adjustable seat and standard armrest, as well as an optional heating and A/C system for our enclosed cabs, the spacious operating platforms of the CX B Series help keep you comfortable all day long and all year round.



Proportional auxiliary hydraulics joystick with thumb toggle puts precision at your fingertips.

THE MONITOR MAKES THE DIFFERENCE

On the CX55B, an optional LCD monitor makes performance data and machine diagnostics readily available. This screen displays:

- “ECO green mark” display for better fuel efficiency during operation
- Fuel efficiency information, including hours, fuel consumption and average fuel efficiency
- Maintenance information
- Operation management
- A variety of alerts



MAINTENANCE MADE EASY.

SERVICEABILITY IS IN OUR DNA

When you invest in CASE equipment, you need it to last. We make it simple. CASE compact excavators are no exception. From wide-open, swing-out access panels to ground-level site gauges and service points, you can do daily maintenance in a matter of minutes. It's the easiest way to help you get the most performance and longest life out of your machine.



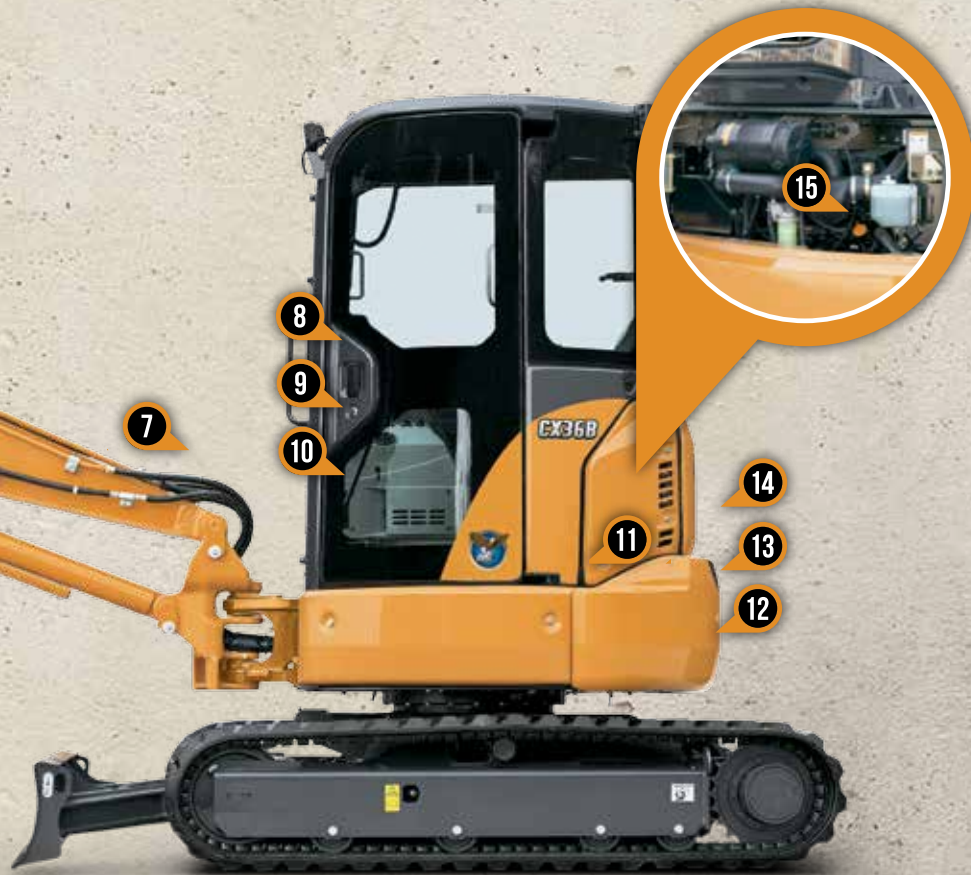
EASY ACCESS TO EVERYTHING

- | | | |
|-----------------------|----------------------------------|-----------------------|
| 1. Air filter | 6. Grouped hydraulic hoses | 11. Lockable fuel cap |
| 2. Water separator | 7. Hydraulic site gauge | 12. Engine oil fill |
| 3. Fuel filter | 8. Hour meter | 13. Engine oil filter |
| 4. Hydraulic oil fill | 9. ISO/SAE pattern changer | 14. Fuel drain |
| 5. Radiator | 10. Single/bi-directional select | 15. Coolant reservoir |

SEE A 360° VIEW



CaseCE.com/360



NO TOOLS NEEDED

The CX B Series continues the CASE hallmark of simple serviceability with features like tool-free access to routine maintenance points.



SUPPORT COMES STANDARD

Base & Extended Warranty Coverage*

1-Year/1,000-Hour Full-Coverage Limited Base Warranty

*Please see your CASE dealer for limitations, exclusions and confirmation of policies in effect.

Purchased Protection Plan

Extension of the factory base and extended coverage is available at an additional cost. Plans are available up to three years/3,000 hours on CASE compact excavators. Talk to your CASE dealer to determine the plan that best fits your needs.

Breakdown Assistance

Standard on all CASE equipment.

STRONGER PRODUCT SUPPORT SOLUTIONS

Your CASE dealer knows best how you can maximize your equipment investment and uptime, with genuine CASE parts, expert service and a complete range of product support solutions – including CASE remanufactured and all-makes parts. CASE supports better parts availability and faster deliveries, through nine parts distribution centers in North America and a forecasting system to ensure that the right parts will be there when you need them. And only CASE dealers have exclusive access to the Electronic Service Tool that quickly pinpoints machine issues to help maximize uptime.



THE CX B SERIES COMPACT EXCAVATORS



| SPECIFICATIONS | CX31B | CX36B | CX55B |
|--|------------------------|------------------------|--------------------------|
| Engine | Yanmar 3TNV88F-E | Yanmar 3TNV88F-E | Yanmar 4TNV88-C-PYB |
| Net hp (kW) | 23.1 (17.2) @ 2400 RPM | 23.1 (17.2) @ 2400 RPM | 37.4 (27.6) @ 2400 RPM |
| Emissions certification* | Tier 4 Final CEGR | Tier 4 Final CEGR | Tier 4 Final (CEGR/DPF) |
| Bucket digging force – lb. (kN) | 6,227 (27.7) | 6,227 (27.7) | 11,128 (49.5) |
| Arm digging force – lb. (kN) | 4,294 (19.1) | 5,036 (22.4) | 5,300 (23.7) |
| Operating weight – lb. (kg) | 7,672 (3 480) | 8,554 (3 880) | 12,295 (5 577) |
| Displacement – in³. (L) | 100.0 (1.6) | 100.0 (1.6) | 134.2 (2.2) |
| Lift capacity @ ground level – lb. (kg) | 1,790 (810) | 1,970 (890) | 2540 (1152) |
| DIMENSIONS | | | |
| Overall height | 8 ft. 3 in. (2.51 m) | 8 ft. 3 in. (2.51 m) | 8 ft. 4 in. (2.55 m) |
| Overall length | 15 ft. 6 in. (4.73 m) | 15 ft. 10 in. (4.82 m) | 18 ft. 1 in. (5.50 m) |
| Width of upperstructure | 5 ft. 0 in. (1.53 m) | 5 ft. 0 in. (1.53 m) | 6 ft. 5 in. (1.94 m) |
| Track overall length | 7 ft. 1 in. (2.16 m) | 7 ft. 1 in. (2.16 m) | 8 ft. 2 in. (2.50 m) |
| Track overall width with shoes** | 5 ft. 1 in. (1.55 m) | 5 ft. 7 in. (1.70 m) | 6 ft. 5 in. (1.96 m) |
| Track shoe width | 11.8 in. (300 mm) | 11.8 in. (300 mm) | 15.7 in. (400 mm) |
| Upperstructure ground clearance | 22.0 in. (570 mm) | 22.0 in. (570 mm) | 24.0 in. (610 mm) |
| Minimum ground clearance | 11.8 in. (300 mm) | 11.8 in. (300 mm) | 13.0 in. (320 mm) |
| Rear tail swing radius | 2 ft. 7 in. (0.78 m) | 2 ft. 0 in. (0.85 m) | 3 ft. 10 in. (1.17 m) |
| Digging depth | 9 ft. 3 in. (2 820 mm) | 10 ft. 0 in. (3 050 m) | 12 ft. 10 in. (3 912 mm) |
| Tail swing overhang | 0 ft. 0 in. (0 mm) | 0 ft. 0 in. (0 mm) | 7.5 in. (191 mm) |
| Max reach @ ground level | 14 ft. 1 in. (4.3 m) | 14 ft. 7 in. (4.45 m) | 15 ft. 0 in. (4.6 m) |

NOTE: *CEGR = Cooled Exhaust Gas Recirculation; DPF = Diesel Particulate Filter.
**Measurements taken using standard equipment.



BUILDING A STRONG CASE

Already in high gear with the arrival of founder J.I. Case's portable steam engine in 1869, we found ourselves at the heart of the road construction boom of the early 1900s. The path was set. Today, CASE is a game changer in construction equipment, financing, parts and service.

Revolutionary is nothing new to CASE, as innovations like the integrated backhoe loader (1957), Ride Control™, over-center boom design and ProCare have shown. It's this ingenuity and spirit that fuels our ongoing pursuit of building industry-leading performance and productivity into every machine throughout our full line of light to heavy equipment.

All of this is backed by a portfolio of more than 10,000 OEM, REMAN and Gold Value parts, more than 350 North American dealer locations, and unmatched financial and insurance services that ensure the best support is always within reach. When all is said and done, our strength is only as solid as the machines we engineer, the support and service we give, and most importantly, the vote of confidence CASE customers have with every bit of it.



Specialized finance programs and flexible leasing packages put you in the driver's seat of industry-leading CASE equipment, while no-nonsense warranties and comprehensive protection plans ensure that your equipment is protected. As the only finance company dedicated to CASE, we offer strong products and services designed around your unique needs and are the only ones supported by the helpful service professionals at your CASE dealer.

To learn more about CASE or for attentive customer service, visit your nearest dealer, call 1-866-54-CASE6 or visit us online at CaseCE.com.





CaseCE.com



©2015 CNH Industrial America LLC. All rights reserved. CASE is a trademark registered in the United States and many other countries, owned by or licensed to CNH Industrial N.V., its subsidiaries or affiliates. CNH Industrial Capital is a trademark in the United States and many other countries, owned by or licensed to CNH Industrial N.V., its subsidiaries or affiliates. Printed in U.S.A.

Form No. CCE201504CEXC
Replaces Form No. CCE201404CEXC



SAFETY™ **NEVER HURTS**

Always read the Operator's Manual before operating any equipment. Inspect equipment before using it, and be sure it is operating properly. Follow the product safety signs and use any safety features provided.

NOTE: All engines meet current EPA emissions regulations.
NOTE: All specifications are stated in accordance with SAE Standards or Recommended Practices, where applicable.



Contains 10%
post-consumer fiber

IMPORTANT: CASE Construction Equipment Inc. reserves the right to change these specifications without notice and without incurring any obligation relating to such change. Availability of some models and equipment builds vary according to the country in which the equipment is used. The illustrations and text may include optional equipment and accessories and may not include all standard equipment. Your CASE dealer/distributor will be able to give you details of the products and their specifications available in your area.



CASE Construction Equipment
is biodiesel-friendly.